



SHIPSTYLE



OAK STONEWASHED BROWN

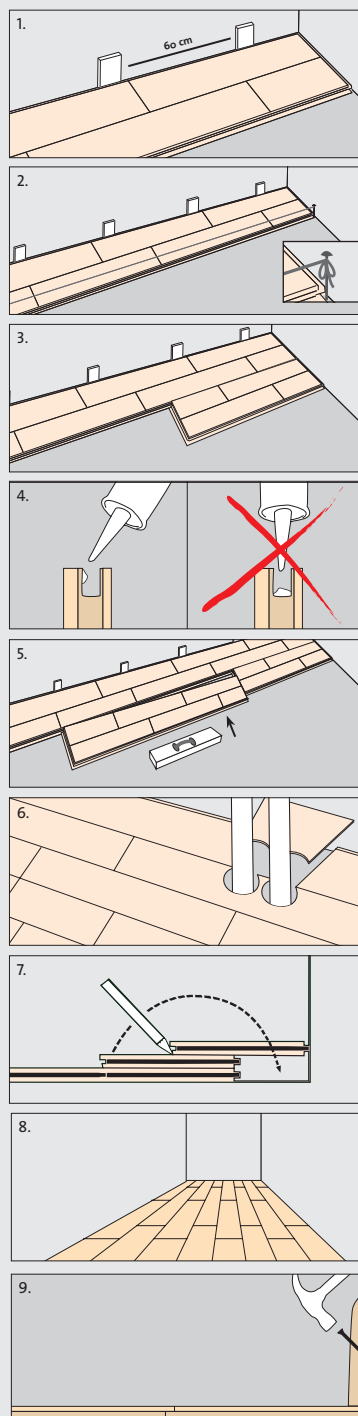


ASH

15 mm Boen 2-Strip, Plank and Shipstyle Installation Instructions for Residential Purposes

1. Place the first board against the wall with the groove facing the wall and the tongue facing outwards. There must be a clearance along all walls, minimum 7 mm. (1 mm per metre room width). This is easily adjusted after 3 – 4 rows have been fitted together. Use wooden blocks or wedges as distance pieces.
2. Ensure that the first row is straight. Use a string to check this.
3. The second row is started by using the sawn off end from the first row, which must be a minimum length of 40 cm. Ensure that all overlaps are a minimum 40 cm.
4. When installing a floating floor the glue must be applied in the tongue and groove. Place a bead of wood glue along the full length of the upper edge of the groove, (towards the hardwood layer). By doing this, the glue is pressed inwards which gives a good distribution of glue.
5. Use a tapping tool when driving the boards together. This tool should be designed to prevent damage to the edges. When 3 rows have been installed, make sure that all joints (including the short ends) are closed. This also ensures that the floor is straight.
6. Apertures for piping etc. must be made as spacious as possible so as to allow the free movement of the floor. The apertures are then covered by pipe collars.
7. When fitting the final board against the wall, place the last board exactly over the penultimate board. The correct width is obtained by using a piece of parquet as a template.
8. When laying parquet floating in corridors, we recommend installation lengthways.
9. Skirtings should always be attached to the wall.

Note! 15 mm Boen Parkett can also be nailed or glued to the sub floor. Please contact us for further information.



3 - 05

PRECONDITION & INSTALLATION • BOEN 15 MM
2-Strip, Plank and Shipstyle

15 mm Boen 2-Strip, Plank and Shipstyle Installation Instructions for Residential Purposes

General information.

Our quality controllers have graded and sorted the parquet. Should there be any doubt concerning grading and/or visible defects, it is important that claims be made prior to the parquet being installed. Remember that the finished result is the responsibility of the installer. Wood is a natural product with natural differences in colour and grain.

Climatic conditions

Boen parquet is dried to 7,5 % (± 1 %) moisture content, equal to the moisture content of furniture wood. It is therefore a matter of course that the building is heated and dry. All windows and doors must be in place and all brick-work, rendering and concreting completed well in advance of the parquet being installed. The room must be heated to a minimum of 15 °C with relative humidity below 60 %. Ensure that the room is kept temperate after the parquet is installed and that relative humidity remains below 60 %. Always store the parquet cartons in dry conditions and do not open them until just before use.

Sub-flooring of chipboard, plywood and floor-boards

The sub-floor must be dry, level and self-supporting. Approved sub-floors are 22 mm chipboard, 19 mm plywood or 21 mm floor-boards. When using the third alternative it is important that the parquet is installed at right angles. Diagonally installed floor-boards and cleft floor boarding must be 28 mm thick. The moisture content of the sub-floor must not exceed 12 %. Any irregular sounds or faults in the sub-floor must be corrected before the parquet is installed. One layer of builders' paper or other suitable underlay should be laid between the sub-floor and parquet, to avoid friction sounds.

Sub-flooring of reinforced concrete or light-weight concrete

Concrete sub-floors must be level and devoid of cement lumps etc. The tolerance limit is ± 3 mm per 2 running metres. Regarding the humidity of the subfloor there are two methods practised internationally and two different sets of figures: Relative humidity (RH) in the concrete has to be below 90 %. The "CM humidity" of the concrete has to be below 2 %. It is always necessary to lay a 0,20 mm thick plastic foil on the concrete to insulate against any remaining damp. In addition to this, a layer of builders' paper or other suitable underlay (2 mm PE-foam, cork, etc) must be laid between the plastic foil and parquet.

Existing Floor Coverings

Floor coverings of linoleum, vinyl, plastic etc. do not need to be removed but a layer of builders' paper should be laid between them and the parquet. Thin, firm carpet e.g. needle felt is, in itself, a good underlay for parquet, but for reasons of hygiene we recommend that these be removed. All other types of carpet must be removed.
NB! Check that the sub-floor is level.

Under-Floor Heating

There are various types of under-floor heating on the market, utilising both electricity and water. We are unable to cover individual types, but a common factor for under-floor heating is that the heating effect must not exceed 60 W/m² and the surface temperature of the subfloor must not exceed 27 °C. The system must be thermostatically controlled and installed in such a way that it produces an even output over the whole surface.
NB! It is important that rugs placed on the parquet do not have rubber or other dense materials on the under side, as this isolates the heat under the rug and can damage the parquet.

Sound Proofing

Sound is measured in decibel (db). It is necessary to differentiate between the sound made by footsteps and reverberation. Stepping sound is the sound perceived (measured) in the room directly under the parquet. Reverberation is the sound in the actual room. Building Authority requirements to curb stepping sounds in a building, consisting of several apartments, is subject to special implementations. The quality, plus construction of a building along with its' dimensions are all important factors contributing to the final result. Consultants and architects should therefore be consulted.

Finishing Treatment

The surface of Boen Parquet is pre-finished either with lacquer or oil. The AS-lacquer (anti scratch) is UV cured, extremely scratch resistant and very durable. We do not recommend the application of an additional coat of lacquer immediately after the parquet is installed. If however, due to special circumstances, it is necessary to re-lacquer immediately, please contact us for instructions. The oil is also UV cured. Oiled floors require more frequent maintenance than lacquered floors. We recommend our special cleaning and maintenance products for the various kinds of surfaces.
The most efficient method of cleaning the floor is to use a dry mop or vacuum cleaner. If it is necessary to wash the floor, it is important to limit the use of water. Do not allow water to dry on the surface of the parquet. For the treatment of unfinished parquet, use appropriate products.

NB: Other rules and regulations apply when treating/maintaining parquet in sports' facilities, office buildings or other public places. For further information please contact us.

