

Carpet Measuring

Measure the maximum length and width at the rooms' widest points, (measure to the back of the doorframe to allow the carpet to be fitted into the door).

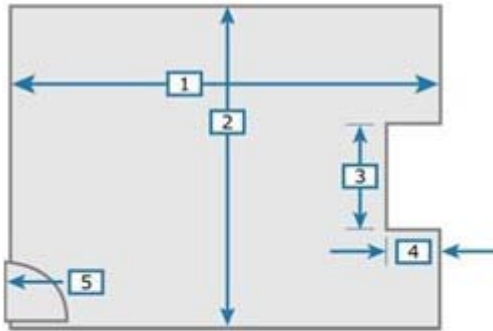
Multiply the width measurement by the length measurement to give you an idea of the total square metres required. (Carpet prices are per square metre).
e.g. $2\text{m} \times 4\text{m} = 8\text{m}^2$

To work out an approximate price take the square metre price e.g. £26.00 and multiply it by your total square metres.
 $£26.00 \times 8\text{m}^2 = £208.00$

If the room is not a regular shape measure the size of any indentations e.g. Fireplace. This is important so that all waste can be utilised ultimately reducing the cost.

Your retailer will be able to organise a measure for you but it is helpful to have your room dimensions with you when looking at carpet. Draw out your room with the dimensions on, this will help when planning your budget and allow you to buy the best quality carpet you can afford.

This will also help when planning the most economical way to use the carpet, which can be available in different widths.



Measure length (1) x width (2)

Important so the correct number of repeats or length is calculated

Measure any indentations (3 and 4)

eg fireplace, bay window This is important so all waste can be utilised, ultimately reducing the cost

Measure to the 'back' of the door frame (5)

It is important to allow enough carpet to be fitted under the door threshold

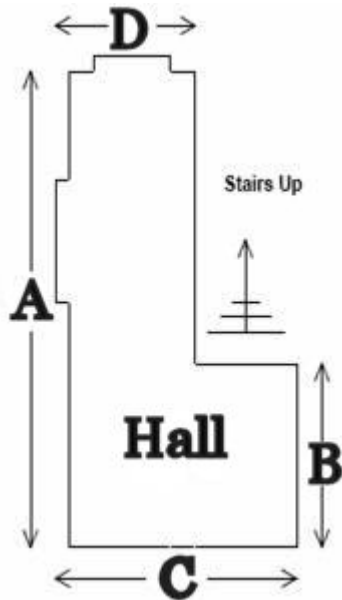
This is only a guide for your own estimation, please consult your retailer or qualified carpet fitter for a final measure.

Pattern Match

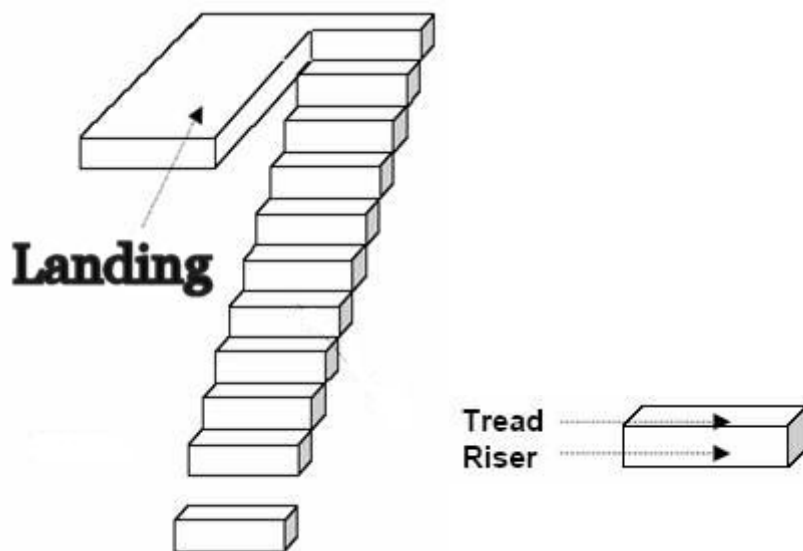
When estimating for patterned carpet please order sufficient material to fulfil critical pattern match requirements. Talk to your retailer for more information.

Measuring a Hall, Stairs & Landing

This is a bit more complicated, but if you sketch the shape and take every single measurement, all should go well.

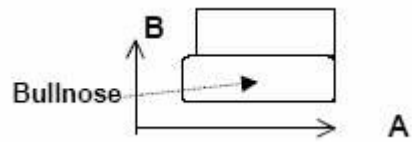


Measure the Hall and the Landing the same as you would a flat area, remembering to go into doorways and to mark clearly where the staircase goes. On the Landing, it is important to include the first riser in your measurements, as shown in the diagram.



For the stairs you will need to check the dimensions of one or two stairs to ensure they are the same and then count the number of stairs you have. In our diagram we have 10 stairs, the very top riser being included in the Landing measurements. Each of our 10 stairs have a 'tread' and a 'riser' and we measure the width of the stair, and then the length of one tread and riser together.

Sometimes at the base of your stairs you will have a stair that has a curved edge. This is called a 'Bullnose' and you will need to measure the tread and riser separately.



Your staircase may also turn and have triangular shaped stairs known as 'Winders'. These will need to be measured separately, noting their widest dimensions.